

# MV "KORSOER" FACT SHEET

CALL SIGN: DQUS - IMO NO. 9159933

T/C OWNERS: K/S COMBI LIFT - 4220 KORSOER - DENMARK  
PORT OF REGISTRY: ST. JOHNS  
FLAG: ANTIGUA



## MAIN PARTICULARS :

### CLASS:

GL + 100 A5 E RO-RO VESSEL – STRENGTHENED FOR HEAVY CARGO - EQUIPPED FOR CARRIAGE OF CONTAINERS AND DANGEROUS GOODS – SOLAS II-2, REG. 54/MC E AUT.

### BUILDERS:

TGS PENDIK SHIPYARD, TURKEY – 1999

### REGISTER TONNAGE:

TYPE	INTERNATIONAL
GROSS	5801
NET	2714

### DIMENSIONS:

LENGTH OVER ALL	100,90 M
LENGTH BETWEEN PP	94,60 M
BREADTH MOULDED	18,90 M
DRAFT FULLY LOADED SUMMER	6,90 M

### DEAD WEIGHT CAPACITIES:

DEAD WEIGHT A.T. 5.600 MTS

### CONTAINER CAPACITIES:

TOTAL CAPACITY 20' x 8' x 8'6"	600
HEREOF: IN CARGO HOLD	223
ON DECK	377
CAPACITY WITH AVERAGE 14 TS REEFER CONTAINERS	318
	30

### STACKLOAD:

TANKTOP	96 TS EACH 20'	120 TS EACH 40'
DECK	40 TS EACH 20'	60 TS EACH 40'
HATCH	50 TS EACH 20'	80 TS EACH 40'

### CARGO HOLD:

BOXED - STEEL FLOORING  
20 AIR CHANGES PER HOUR IN PORT  
10 AIR CHANGES PER HOUR AT SEA

### HATCHES:

1 HATCH WEATHERDECK	70,3 M X 15,2 M
1 HATCH TWEENDECK	51,3 M X 15,2 M

### CUBIC CAPACITIES IN HOLDS:

WITH TWEEN-DECK HATCH COVERS 10.600 CBM

### CRANES:

2 ELECTRO HYDRAULIC CRANES PORT SIDE 60 TS / 13 M & 40 TS / 26,5 M COMBINABLE UP TO 120 TS

### DECK STRENGTH:

TANKTOP - STEEL	10,0 TS PER M2
TWEEN DECK - STEEL PONTOONS	3,0 TS PER M2
MAIN DECK - STEEL PONTOONS	2,45 TS PER M2

### SPEED AND CONSUMPTION:

14,0 KNOTS ON ABT 19 TS IFO 380  
NO GASOIL AT SEA

### TANK CAPACITIES:

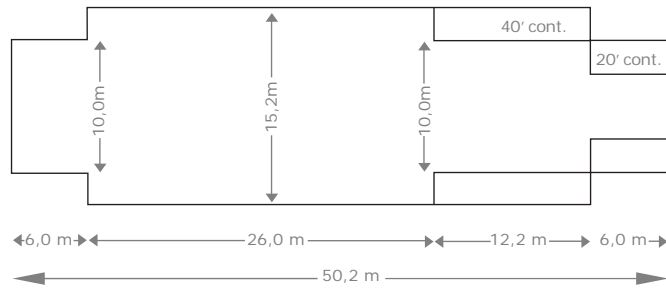
FUELOIL	ABT. 547 TS
FRESH WATER	123 TS
BALLAST WATER	2282 TS

### ENGINES:

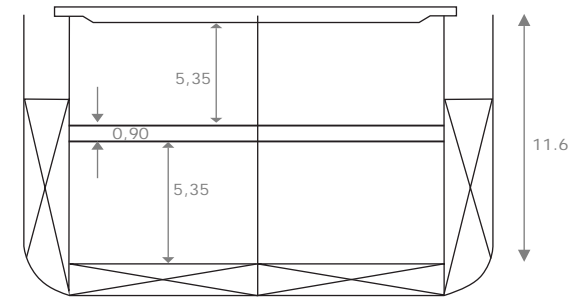
MAIN ENGINE:	1 MAN B&W 9L 32/40
AUX. ENGINES:	2 MAN B&W 4- STROKE DIESEL ENGINES

ALL PARTICULARS BELIEVED TO BE CORRECT, BUT NOT GUARANTEED

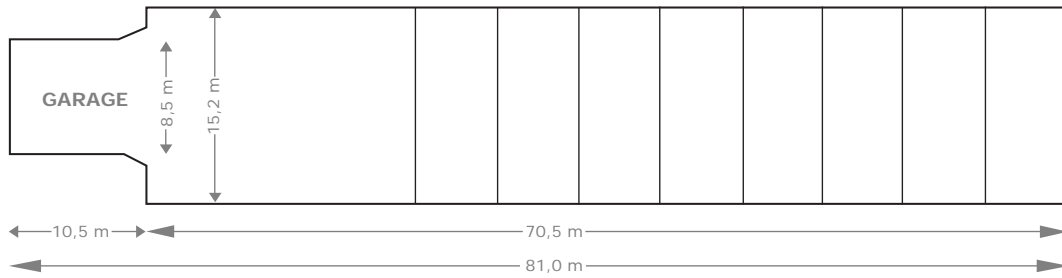
LOWER HOLD



HOLD 1



TWEEN DECK



WEATHER DECK

